

**ACTIVITIES FROM THE GARDEN:
MIRRORED PATTERNS WITH LEAVES & PLANTS**

RUBBINGS/FROTTAGE



YOU WILL NEED:

Wax Crayons/s; thin paper/computer printer paper; board or table; leaves/plant parts and a mirror.

STEP ONE

Place leaves on table or board. Place paper over them. Hold still.

STEP TWO

Rub with the side or tip of a thick crayon over the paper on top of the leaves. You could move them and layer them up with different colours. You could be a lot more elaborate than this if you wish.

STEP THREE

Experiment with different rotations of the rubbings in front of the mirror to see how the pattern appears.

You could also photograph the rubbing, and flip it/mirror it/ duplicate it, using your phone camera or simple photo software on the computer, and then join the pieces together.

ACTIVITIES FROM THE GARDEN:
MIRRORED PATTERNS WITH LEAVES & PLANTS

LEAVING TRACES



YOU WILL NEED:

Paper (black, white or colour, depending on colour of your 'dust'); chalk or flour; turmeric; paprika. Wet glue, e.g. a PVA or gum glue; paintbrush or spreader; a cheese grater and leaves, etc.



STEP ONE

Coat the paper with wet glue, and push plants down onto it firmly



STEP TWO

Sprinkle your chosen materials (I used a cheese grater to grate my chalk stick onto black paper, over the leaves but you could sprinkle flour or turmeric from the container or a sieve.)

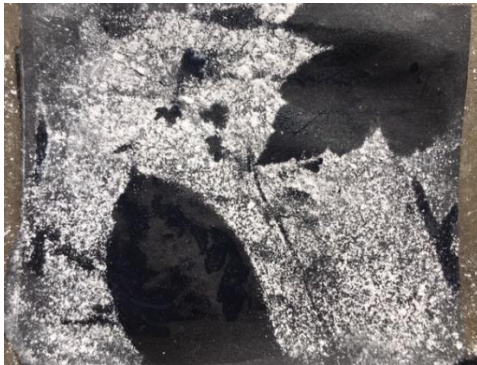
ACTIVITIES FROM THE GARDEN: MIRRORED PATTERNS WITH LEAVES & PLANTS

RESONANCE-CAMBRIDGE



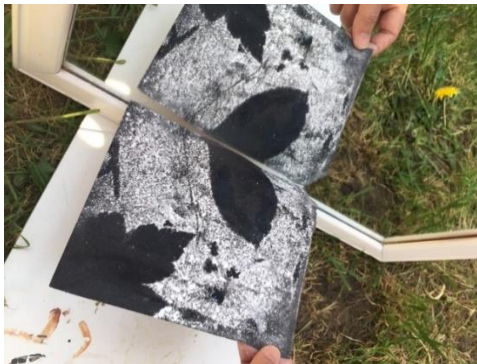
STEP THREE

Lay over some kitchen towel or paper and rub briefly



STEP FOUR

Remove leaves to see the traces of the plant where the powder has been blocked



STEP FIVE

Experiment with the mirror or photography as above to create repeat patterns

ACTIVITIES FROM THE GARDEN: MIRRORED PATTERNS WITH LEAVES & PLANTS

RESONANCE-CAMBRIDGE

PLANT PRINTS



YOU WILL NEED:

Paint; paint brush; paper; leaves, etc.



STEP ONE

Paint the leaves on a board (Paint one side of the leaf for a single print, both sides if folding)

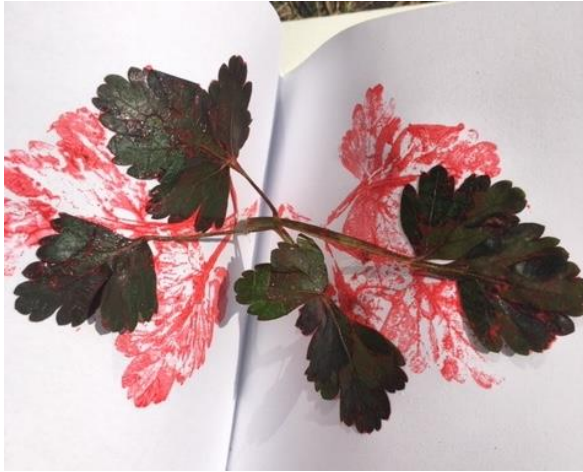


STEP TWO

Place the leaf on the paper and fold paper in half over it (or press your leaf painted one side onto the paper and repeat)

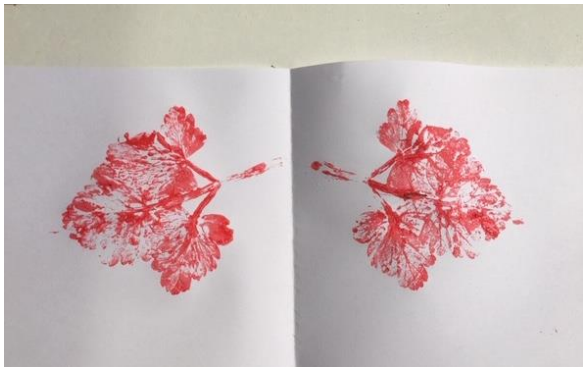
ACTIVITIES FROM THE GARDEN: MIRRORED PATTERNS WITH LEAVES & PLANTS

RESONANCE-CAMBRIDGE



STEP THREE

Carefully peel off your leaf, or if folding, peel the paper apart



STEP FOUR

See your print/mirrored print. You could print many different leaves on the same paper to build up a design. (Let each print dry in between if folding)

Our thanks to Sarah Sabin for sharing these ideas.

To see how Sarah Sabin has used these techniques in her designs for Anstey Way go to <http://resonance-cambridge.co.uk/developments/anstey-way/>

Why not share the designs you have created on: [Resonance-Cambridge](https://www.resonance-cambridge.co.uk/) [@ResonanceCam](https://www.instagram.com/ResonanceCam)